

BOARD MEETING NOTES

The BTU Board of Directors met on
Monday, May 15, 2017
and discussed the following topics:

Distribution Pole Reinforcement Project

A contract with Smith Mountain Investments LLC to complete the distribution pole reinforcement project in the amount of \$215,526.15 was approved. This program is designed to refurbish poles weakened by decay or other damage so they exceed National Electrical Safety Code strength requirements at a fraction of the cost of pole replacement.

Five-Year Capital Improvement Plans

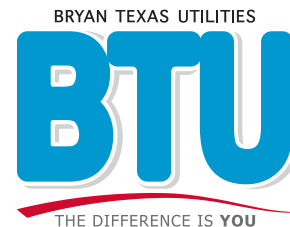
General Manager Gary Miller presented the Capital Improvement Plans for all Divisions of BTU. The budget reflects an \$11.5 million decrease from last year's 5 year CIP plan for the BTU City operations and a \$3.3 million increase in Rural operations. The five-year capital improvement plan for both competitive and non-competitive budgets was approved.

American Public Power Association's (APPA) RP3 Award

BTU was awarded the APPA Diamond RP3 award for the second consecutive time, scoring a perfect 100% on all criteria. The award was announced and presented at the APPA Engineering and Operating Conference in San Antonio on May 8, 2017.



SAFETY:
For Work. For Home. For Life.



BRYAN TEXAS UTILITIES

205 East 28th Street • Bryan, TX 77803

email: ContactBTU@btutilities.com

www.btutilities.com

Hours of Operation

Monday - Friday, 8 a.m. - 5 p.m.

BOARD OF DIRECTORS

Mr. Paul Turney, Chairman
Mr. David Bairrington, Vice Chairman
Mr. Bill Ballard, Secretary
Mr. Buppy Simank, Ex-Officio
Mr. Carl L. Benner
Mr. Flynn Adcock
Mr. A. Bentley Nettles
Mr. Art Hughes

GENERAL MANAGER

Gary Miller

EXECUTIVE DIRECTORS

Randy Trimble
David Werley

DIVISION MANAGERS

James Bodine
Bill Bullock
Shawndra Curry
Ken Lindberg
Kristi Nash
Vicki Reim
Scott Smith
James Tanneberger
Wes Williams

Doug Lyles, Chief Risk Officer

CITY OF BRYAN

Kean Register, City Manager
Joe Hegwood, Chief Financial Officer
Bernie Acre, Chief Information Officer

IMPORTANT NUMBERS

Billing/Collections/Connects	(979) 821-5700
Electrical Outage/Lines Down	(979) 822-3777
Distribution/Line Design	(979) 821-5770



BryanTexasUtilities



cityofbryan



BTU_BryanTX



cityofbryan



RELAY FOR LIFE

BTU raises over \$2,200 to help fund cancer research

For the third consecutive year, BTU staff members have teamed up to help find a cure for cancer by raising money for the American Cancer Society's Relay for Life. This annual event took place May 5-6 at the Brazos County Expo Center, and was widely attended by organizations throughout the community.

This year, the BTU team was able to raise over \$2,200 to help fund cancer research. Thanks to the efforts of our dedicated staff members, we had yet another great year fundraising, relaying, celebrating those who triumphed over this disease, and remembering those we've lost.

We are proud to support the American Cancer Society in their efforts to end cancer.



Mr. Kevin Rodgers

May 7, 1967 - April 29, 2017

Kevin Rodgers, a dedicated BTU employee for over 22 years, passed away after a brave battle with cancer. He is remembered as a loving husband, father, uncle, grandfather, and friend, and will be deeply missed by all of us at BTU.

ARE YOU SAFETY SAVVY?

How savvy are you about electrical safety?

Take this quiz from the Electrical Safety Foundation International to find out how much you know about electrical safety in your home.

- 1. True or False: Using a corded telephone during a lightning storm is safe.**

a. True b. False
- 2. Why do some outlets have three holes?**

a. To provide more voltage
b. The third prong is the "ground"
c. To accommodate foreign appliances
d. It keeps the plug from falling out
- 3. When using a portable generator during a power outage, you should _____ .**

a. Connect generators directly to the household wiring only when an appropriate transfer switch is installed to prevent "backfeeding" along power lines, which can pose a risk to utility lineworkers making repairs
b. Position the generator outside the house and away from doors, windows or vents that could allow carbon monoxide to enter the home
c. Make sure the generator is properly grounded
d. Plug it into a ground-fault circuit interrupter
e. All of the above
- 4. The most common scenario for electrocutions while using power tools is _____ .**

a. The equipment coming into contact with water
b. The equipment coming into contact with electrical wires
c. The equipment malfunctioning
d. Exposure to bare wires by grabbing a cord with cracked or broken insulation
- 5. Smoke alarm batteries should be changed every:**

a. Month b. 6 months
c. Year d. 2 years
- 6. You shouldn't swim near docks or marinas because:**

a. Boats may not see you and run you over
b. There could be lost fishing equipment in the water such as hooks or tangled line
c. The water might be electrified by docks or boats that leak electricity into the water
d. All of the above
- 7. In a study conducted by Temple University's Biokinetics Laboratory, what percentage of children 2-4 years old were able to remove the plastic outlet covers from sockets in less than 10 seconds?**

a. 25 percent b. 50 percent
c. 75 percent d. 100 percent
- 8. The proper way to safely move away from a downed power line is to _____ until you are 35 feet away.**

a. Take small hops with your feet together
b. Keep your feet together and on the ground at all times
c. Skip so that only one foot is on the ground at a time
d. Crawl on all fours
- 9. True or False: You can be electrocuted using a tree trimmer near a power line even if you don't touch the wires.**

a. True b. False
- 10. True or False: Swallowing a button-cell battery can be fatal.**

a. True b. False
- 11. What age group has the highest risk of death from fire?**

a. 15 years and under b. 21-35 years
c. 50-64 years d. Adults over 65
- 12. Birds are able to perch on power lines without risk of injury because:**

a. Those power lines do not have power running through them at that time
b. The unique skin on the feet of birds protects them
c. Sitting on one wire does not provide a ground or connect a circuit, so the current doesn't leave the wire and continues on its path
d. Birds' bones are hollow, allowing the current to pass through them without harm

Answers:
(1) b; (2) b; (3) e; (4) b; (5) c; (6) d; (7) d; (8) b; (9) a; (10) a; (11) c; (12) d

POWER LINE SAFETY TIPS

Here's a fact you might not know: You don't have to touch a power line to be in danger; high-voltage electricity can jump to anyone who gets too close. Fortunately, there are many ways to stay safe around power lines, whether they're in the air or on the ground.



Look up before raising a ladder or pole to make sure that it will not come within 10 feet of any power lines. Use wooden or fiberglass ladders outdoors. Metal ladders conduct electricity.

Contact Bryan Texas Utilities (BTU) immediately to report downed power lines, which can carry an electric current strong enough to cause serious injury or even death. Electricity tends to move from a high-voltage zone to a low-voltage zone—and it could make that journey through your body.

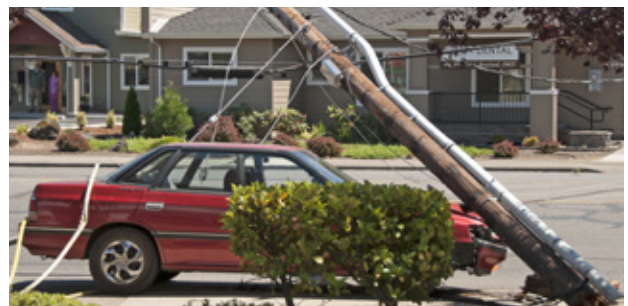
You should assume that all downed power lines are live. You cannot tell just by looking at a power line whether it is energized. Move at least 10 feet away from it and any nearby object it is touching, such as a fence or a tree limb. The ground around power lines also might be energized.

The proper way to move away from a downed line is to shuffle away with small steps, keeping your feet together and on the ground at all times. This will minimize the potential for an electric shock.

If you see someone who is in direct or indirect contact with a downed line, do not touch the person—or you could become the next victim. Call 911 and BTU's System Operation Center at 979-822-3777 for help.

Do not attempt to move a downed power line or anything else in contact with it by using an object such as a broom or stick. Nonconductive materials including wood or cloth can conduct electricity if even slightly wet.

Be careful not to touch or step in water near a downed power line.



Do not drive over downed power lines. If your car comes into contact with a downed power line while you are inside, stay in the car. Honk your horn to summon help, but warn others to stay away from your car. If you must leave your car because it is on fire, jump out of the vehicle with both feet together and avoid simultaneous contact with both the car and the ground. Shuffle away from the vehicle.

General A. Bentley Nettles

BTU Board Member Named Brigadier General

Story by Kala McCain/Photos by Brian Jones

Being a Brigadier General doesn't just happen and it certainly isn't every day that a community has the honor of a General serving on a City board. But that is just the case for the City of Bryan and Bryan Texas Utilities (BTU). General A. Bentley Nettles joined the BTU Board of Directors in 2015 and continues to bring valuable insight from three decades of service in the armed forces and his experience as General Counsel for the Texas Army National Guard.

General Nettles held the rank of Colonel until just this year when he retired from the armed forces after dedicating 31 years to the service. And that alone is quite the feat. "Within the Army National Guard, only one out of every 400 Lieutenants becomes Colonel," explained General Nettles. "And if they send you to the senior service college... normally that means they are grooming you toward a general officer position." After a nomination by the President and confirmation by the Senate, there is a two-year window in which an army officer can be promoted. Outside of this time frame, the Governor has the statutory authority to brevet an officer to a higher rank. This was the case for General Nettles as he was promoted to the honorary rank of Brigadier General on the date of his military service retirement in March 2017. "I have only seen this done twice in my 31 years of service, with one of those times being mine," recalled General Nettles. "I am the only JAG officer we have ever done it for."

When asked what credentials he had or why he would have been selected to receive this honorary rank, General Nettles humbly responded that it is based on your service and what you did. In his case, a better question may have been what didn't he do. "Unlike a lot of military officers, their career path is very specific, the Army asked me repeatedly to do things that were kind of entrepreneurial that the Army had never done before," shared General Nettles. His service in the military includes peacekeeping tours in Bosnia as well as combat tours in Afghanistan and Iraq. He earned 24

different military awards and badges including three Bronze Stars, the Purple Heart, and the Legion of Merit, one of the United States Military's most prestigious awards.

General Nettles' lifetime of service took root at Texas A&M University where he received his commission through the Reserve Officer Training Corps Program in 1985 and earned his Bachelor of Science in Business Management. Just two years later he successfully graduated from the South Texas College of Law with a Juris Doctor, a degree that served as an important stepping stone for his successful tenure as General Counsel within the Texas Army National Guard from 2008 until 2015. In 2010, General Nettles furthered his education by earning a Master of Science in Security Studies through the Center for Homeland Defense and Security and was then selected as a National Security Fellow to attend the Fletcher School of Law and International Diplomacy at TUFTS University in Medford, Massachusetts. Of all the Army War College selectees, just 72 are selected annually to participate in this prestigious research fellowship.

His call to service goes beyond his military duties. In addition to serving on the BTU Board, he is one of the founders and serves as the current Chairman of Brazos Valley Cares, Inc. Established in 2015, this local, non-profit organization is devoted to supporting the veterans of the United States military and their families with a specific interest in those families that reside in the Brazos Valley. Then in January 2016, he opened his own private practice law firm in Bryan that focuses on small business, estate planning, and representing veterans before the United States Department of Veterans Affairs. Even though General Nettles and his family aren't native to the area, they moved to the Brazos Valley in 2001 making this community their home. And they have no plans to leave.



Finishing

Kent Moore Cabinets, Ltd.: **LIGHTING THE WAY FOR A BRIGHTER FUTURE**

Story by Kala McCain/Photos by Brian Jones and Kent Moore Cabinets, Ltd.

What began as a small side job to support the cost of higher education at Texas A&M University in 1971, has blossomed into a long-term, successful business. Kent Moore Cabinets, Ltd., named after its founder, is a leader in custom built cabinetry serving homeowners and independent contractors throughout Central Texas and beyond. With seven design centers across the lone star state, it doesn't matter which one a customer visits; their custom cabinetry order is made right here in Bryan.

There are two different plants, one in the Brazos Industrial Park on Stone City Drive and the other near Downtown Bryan on Fountain Avenue, with the

Corporate Headquarters housed just across the street from the Stone City plant. The company's commitment to ensuring a top-quality product is evident at each of these facilities. And it clearly begins with strategic investment to support a safe, pleasant working environment for their employees. Casey Moore, President of Kent Moore Cabinets speaks to this. "The new LED lighting has been a positive upgrade for us at Kent Moore Cabinets," he shared. "The lights are much brighter and give our employees a better view of the work at hand. On top of that, there is a savings to our cost of electricity for lighting. Now that's a win-win."



A couple years ago, the company realized the significant benefit there was to be had by converting their existing fluorescent lighting to LED. So, they went for it. This project, in partnership with BTU's SmartBUSINESS program that provides incentives for efficiency and reduces overall demand, is being completed in several phases and includes not only interior lighting but exterior lighting as well. When asked how they moved forward with such an extensive project, the operations division shared that the process took a little planning but has been well worth the effort. The existing fluorescent and incandescent lighting set-up was evaluated, areas that could benefit the most from improved lighting were identified, then the remaining areas were prioritized, and as funding allowed, lights began being replaced. A local energy management contractor specializing in the installation of LED lighting, MHSC, led the successful conversion of the Fountain and Stone City plants and continues to lead efforts at headquarters as they phase into new LED lighting on the interior.

"Fountain and Stone City are 100% LED, inside and out," shares Vice President of Operations Jack Marino. "The exterior lights here at our headquarters are also 100% LED and we are still working toward that same goal with the interior lighting. We get a lot better lighting for a lot better cost. There is a night and day difference between fluorescent and LED." So why does lighting really matter to the company? Well, for this industry it means quite a bit. Every piece of finished cabinetry that is shipped from Kent Moore Cabinets, Ltd. is individually inspected to ensure a flawless product leaves the plant. Whether it is checking the raw materials or verifying the stain set properly, lighting plays an important role in making sure each customer is pleased with their purchase.

And of course, there are cost savings found through energy efficiency, reduced labor, and less frequent

bulb replacements. "Unlike in a residential home, it is more difficult to see the trend of cost savings on our monthly utility bill," explained Mr. Marino. "But it is evident over time across the board as we save on labor because we aren't having to change fluorescent lightbulbs or ballasts out and we save on the bulbs themselves since we aren't having to replace them nearly as frequently," shared Vice President Marino. "Only having to change out bulbs on a vaulted 30' ceiling using a manlift once every 10 years or so rather than each year, is certainly of benefit."

The increased energy efficiency has a positive impact not only on their business but the entire BTU service area as well. "We have reduced the amount of energy we need freeing up energy needed by others here," explains Mr. Marino. Bryan sits in the heart of the Brazos Valley and has been named one of the fastest growing cities in the state with expansive growth expected to continue. So, when businesses like Kent Moore Cabinets, Ltd. take measures to reduce their consumption, it has a positive and notable impact not only for their bottom line, but for each customer powered by BTU.



Take a video tour of the Kent Moore Cabinets, Ltd. manufacturing plants, read about their commitment to environmental sustainability, and more at www.kentmoorecabinets.com.

To help businesses and residential property owners increase their energy efficiency, BTU offers two different incentive programs: SmartBUSINESS for commercial and industrial customers and SmartHOME for residential homeowners. Learn how you can take advantage of these programs and increase energy efficiency at www.btutilities.com.