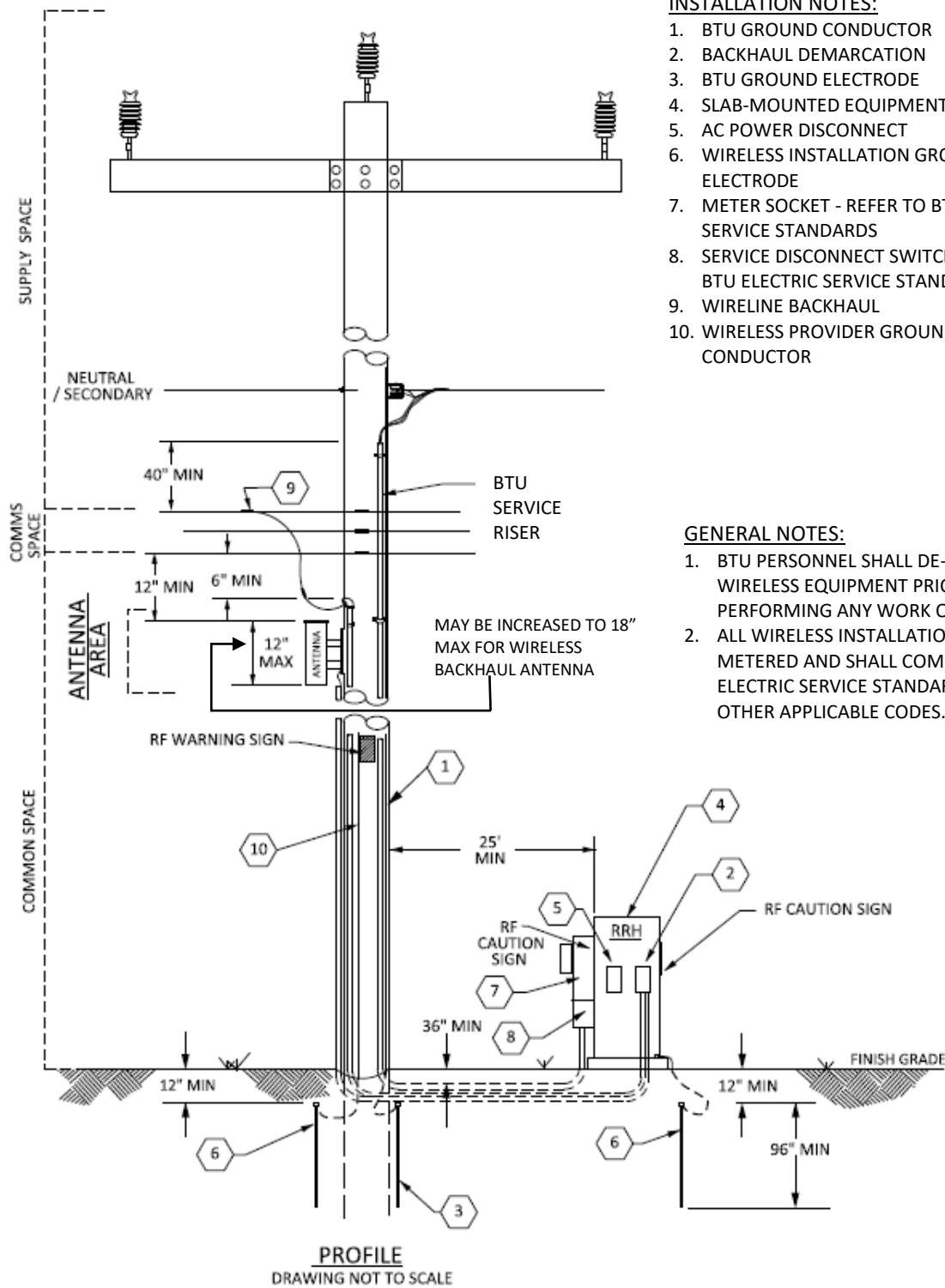


II: Wireless Antenna Installation – Mid-Pole Slab Mounted Equipment Cabinet



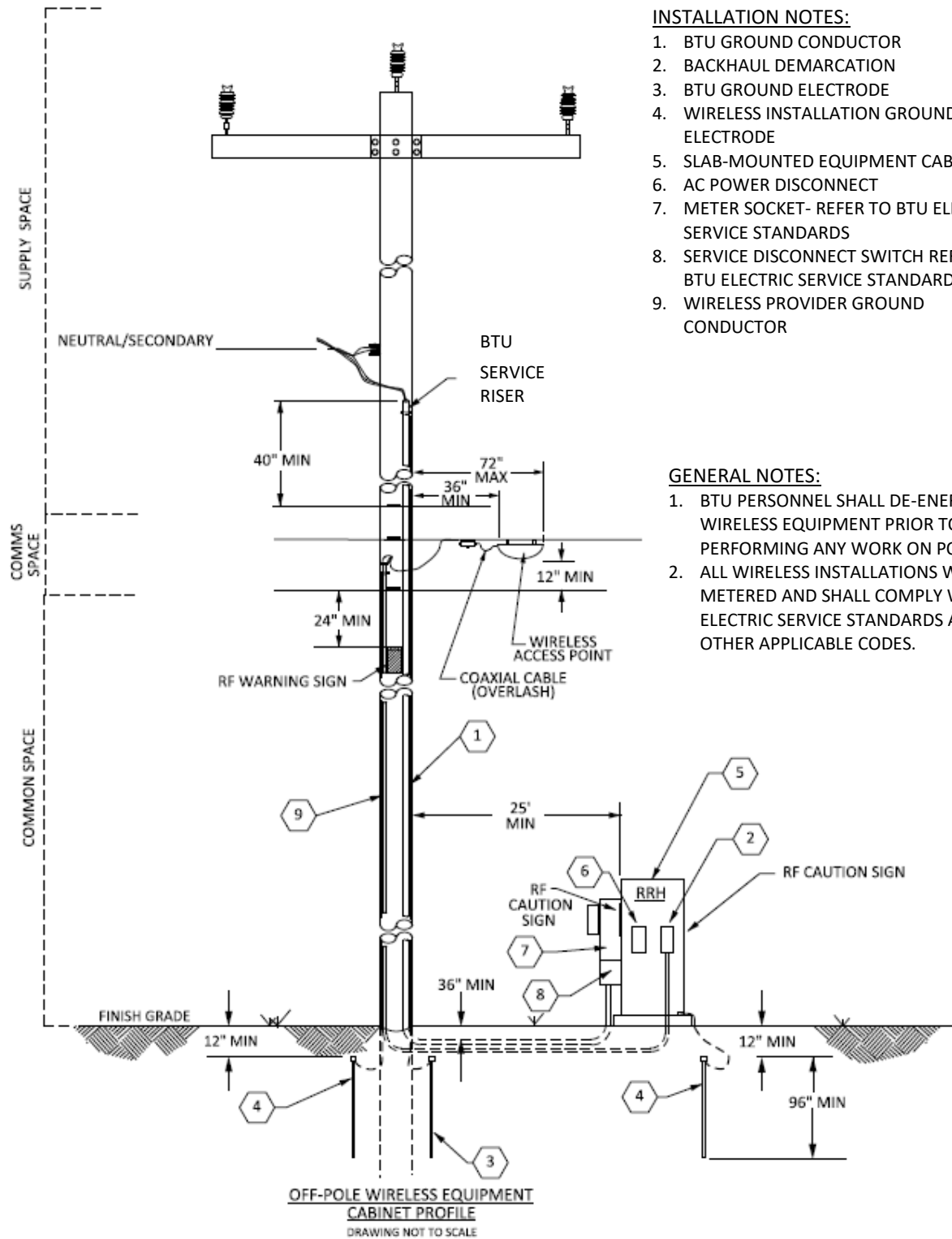
INSTALLATION NOTES:

1. BTU GROUND CONDUCTOR
2. BACKHAUL DEMARCATION
3. BTU GROUND ELECTRODE
4. SLAB-MOUNTED EQUIPMENT CABINET
5. AC POWER DISCONNECT
6. WIRELESS INSTALLATION GROUND ELECTRODE
7. METER SOCKET - REFER TO BTU ELECTRIC SERVICE STANDARDS
8. SERVICE DISCONNECT SWITCH - REFER TO BTU ELECTRIC SERVICE STANDARDS
9. WIRELINE BACKHAUL
10. WIRELESS PROVIDER GROUND CONDUCTOR

GENERAL NOTES:

1. BTU PERSONNEL SHALL DE-ENERGIZE WIRELESS EQUIPMENT PRIOR TO PERFORMING ANY WORK ON POLE.
2. ALL WIRELESS INSTALLATIONS WILL BE METERED AND SHALL COMPLY WITH BTU ELECTRIC SERVICE STANDARDS AND ALL OTHER APPLICABLE CODES.

I2: Wireless Antenna Installation – Mid-span Slab Mounted Equipment Cabinet



INSTALLATION NOTES:

1. BTU GROUND CONDUCTOR
2. BACKHAUL DEMARCATION
3. BTU GROUND ELECTRODE
4. WIRELESS INSTALLATION GROUND ELECTRODE
5. SLAB-MOUNTED EQUIPMENT CABINET
6. AC POWER DISCONNECT
7. METER SOCKET- REFER TO BTU ELECTRIC SERVICE STANDARDS
8. SERVICE DISCONNECT SWITCH REFER TO BTU ELECTRIC SERVICE STANDARDS
9. WIRELESS PROVIDER GROUND CONDUCTOR

GENERAL NOTES:

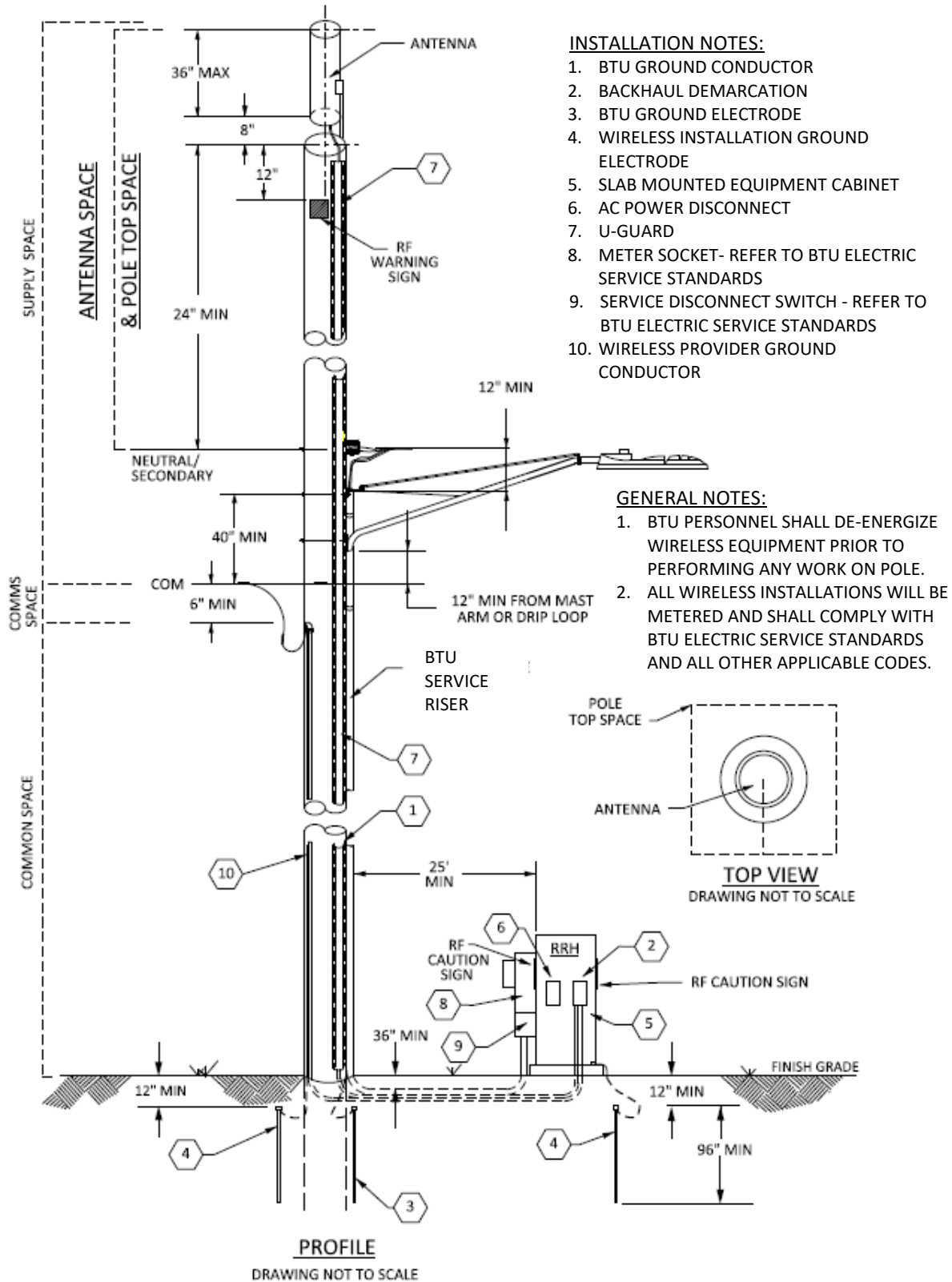
1. BTU PERSONNEL SHALL DE-ENERGIZE WIRELESS EQUIPMENT PRIOR TO PERFORMING ANY WORK ON POLE.
2. ALL WIRELESS INSTALLATIONS WILL BE METERED AND SHALL COMPLY WITH BTU ELECTRIC SERVICE STANDARDS AND ALL OTHER APPLICABLE CODES.

OFF-POLE WIRELESS EQUIPMENT CABINET PROFILE
DRAWING NOT TO SCALE

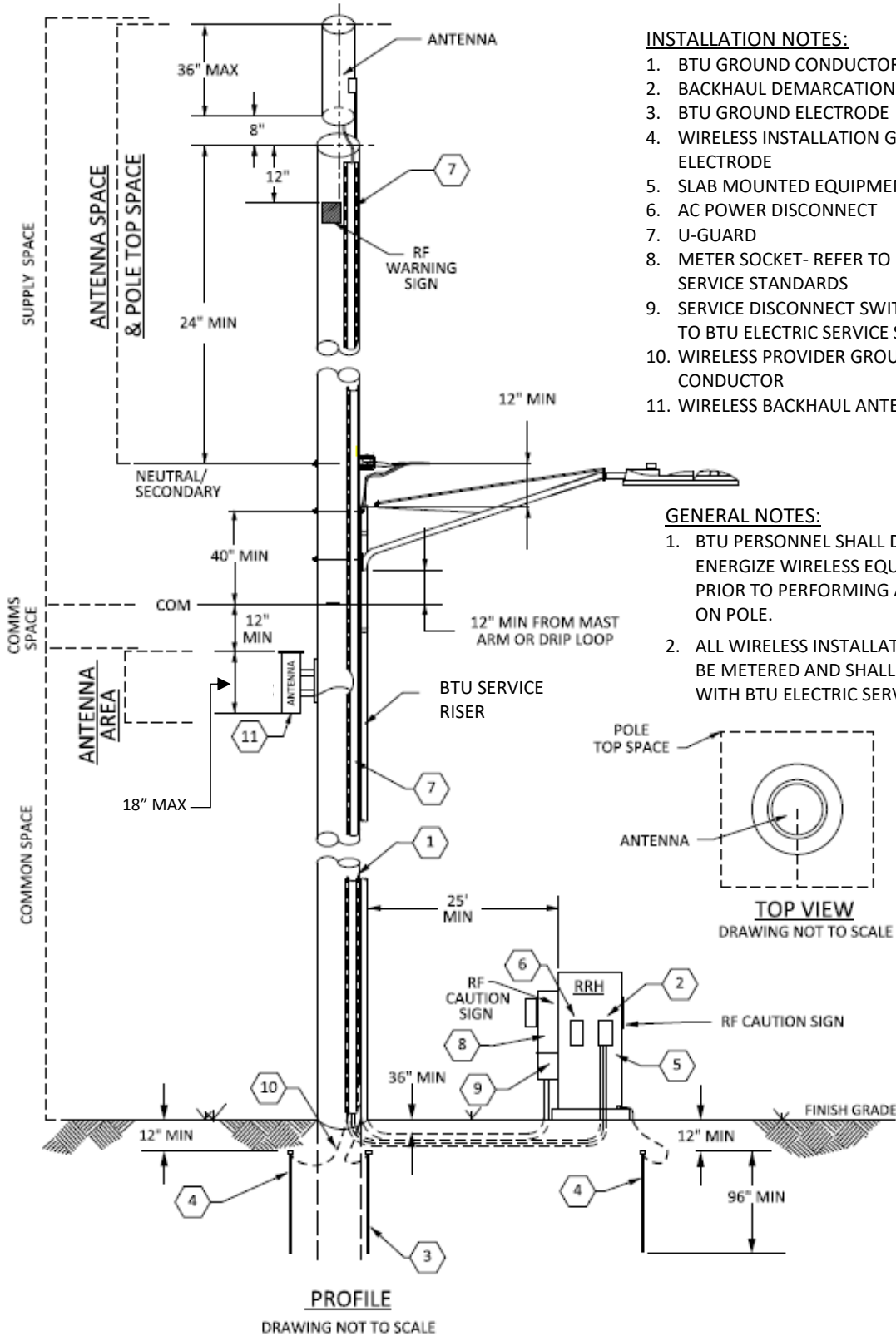
I3: Reserve for Future Use

I4: Reserve for Future Use

I5: Wireless Antenna Installation – Overhead Fed Streetlight Pole – Slab Mounted Equipment Cabinet

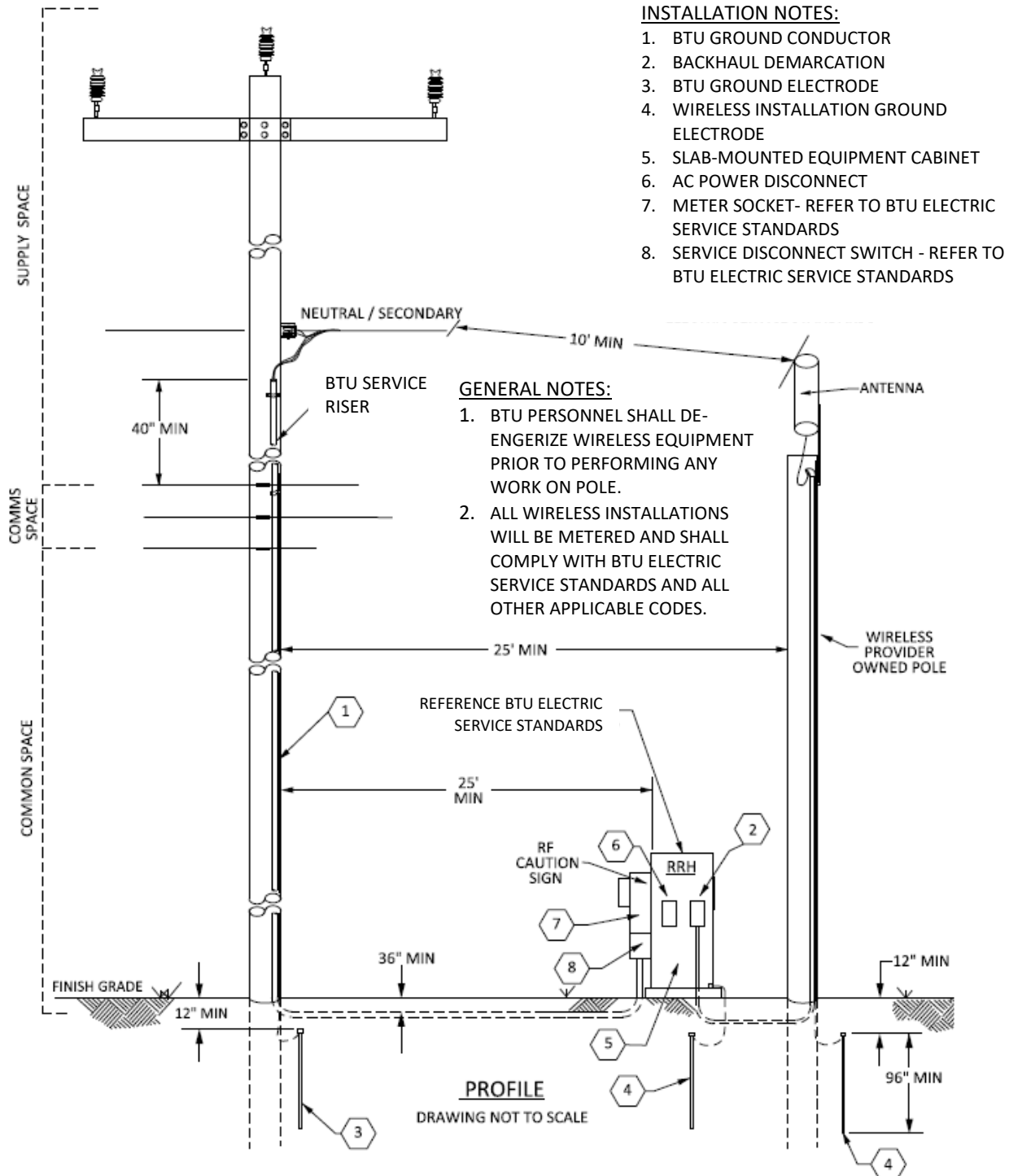


I6: Wireless Antenna Installation – Overhead Fed Streetlight Pole with Mid Pole Wireless Backhaul Antenna – Slab Mounted Equipment Cabinet



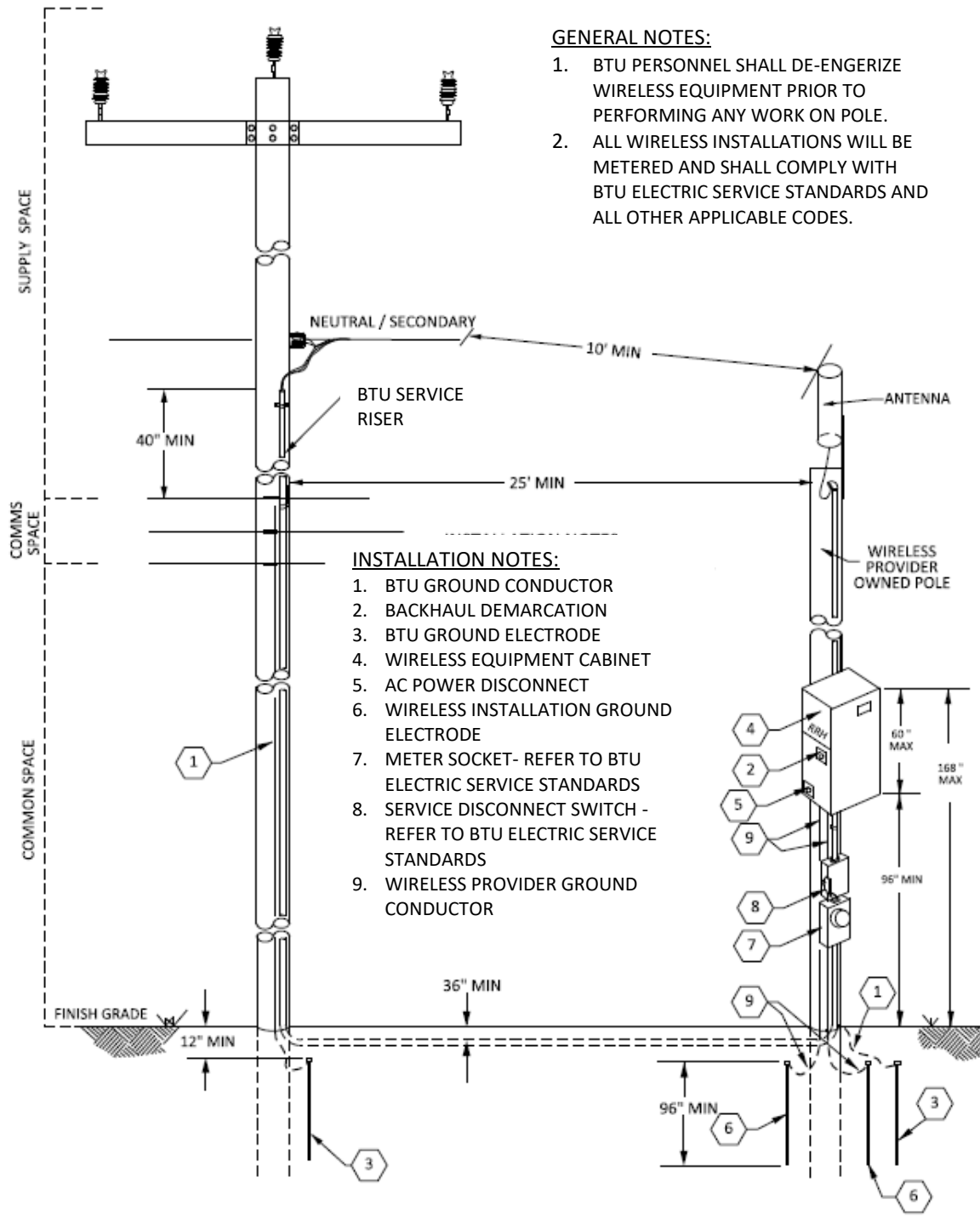
- I7: Reserve for Future Use
- I8: Reserve for Future Use
- I9: Reserve for Future Use
- I10: Reserve for Future Use
- I11: Reserve for Future Use
- I12: Reserve for Future Use

I13: Technical Design Standard for Node Support Pole (Electric Service Request) Slab Mounted Equipment Cabinet



NOTE: ANY PROVIDER THAT WISHES TO INSTALL ITS OWN "NODE SUPPORT POLE" WITHIN THE BTU SERVICE AREA, PURSUANT TO CHAPTER 284 OF THE TEXAS LOCAL GOVERNMENT CODE, SHALL MAKE A REQUEST FOR ELECTRIC SERVICE. BTU SHALL PROVIDE ELECTRIC SERVICE TO THE "NODE SUPPORT POLE" BASED ON THE REQUIRMENTS OF THIS TECHNICAL DRAWING.

I14: Technical Design Standard for Node Support Pole (Electric Service Request) Pole Mounted Equipment Cabinet



GENERAL NOTES:

1. BTU PERSONNEL SHALL DE-ENERGIZE WIRELESS EQUIPMENT PRIOR TO PERFORMING ANY WORK ON POLE.
2. ALL WIRELESS INSTALLATIONS WILL BE METERED AND SHALL COMPLY WITH BTU ELECTRIC SERVICE STANDARDS AND ALL OTHER APPLICABLE CODES.

INSTALLATION NOTES:

1. BTU GROUND CONDUCTOR
2. BACKHAUL DEMARCATION
3. BTU GROUND ELECTRODE
4. WIRELESS EQUIPMENT CABINET
5. AC POWER DISCONNECT
6. WIRELESS INSTALLATION GROUND ELECTRODE
7. METER SOCKET - REFER TO BTU ELECTRIC SERVICE STANDARDS
8. SERVICE DISCONNECT SWITCH - REFER TO BTU ELECTRIC SERVICE STANDARDS
9. WIRELESS PROVIDER GROUND CONDUCTOR

NOTE: ANY PROVIDER THAT WISHES TO INSTALL ITS OWN "NODE SUPPORT POLE" WITHIN THE BTU SERVICE AREA, PURSUANT TO CHAPTER 284 OF THE TEXAS LOCAL GOVERNMENT CODE, SHALL MAKE A REQUEST FOR ELECTRIC SERVICE. BTU SHALL PROVIDE ELECTRIC SERVICE TO THE "NODE SUPPORT POLE" BASED ON THE REQUIREMENTS OF THIS TECHNICAL DRAWING.