

## Regular Board of Directors *Meeting Notes*

### February 14, 2022

#### Presentation of the Audited FY2021 Financial Statement

Ms. Amanda Eaves of BKD, LLP reviewed the Fiscal Year 2021 audit report. The financials received a clean opinion with no material weaknesses to report in either the City or Rural System audited financials.

#### Approval of a Contract for Substation Design

The Board approved a contract with Burns and McDonnell Engineering for the design of a 138kV ring bus transmission switching station off Highway 47.

#### Approval of a Contract for Transmission Line Design

The Board approved a contract with Burns and McDonnell Engineering for the design of two 138kV lines to serve a BTU switching station off Highway 47.

#### Approval of a Contract for the Construction of a Transmission Project

Mr. Randy Trimble, Executive Director of Energy Delivery, presented the bid tabulation for the Rodgers-Rayburn & Loop-in Stage II 69kV Transmission Construction Project. Staff determined that Utility Construction Services, LLC had the best value bid. The Board approved a contract with Utility Construction Services, LLC for the project.



Downtown Bryan  
Transformer Replacement

BRYAN TEXAS UTILITIES  
**KIOSKS**

BTU Drive Thru – 205 E. 28th St. (Open 24 Hours)  
HEB Grocery – Tejas Center on Villa Maria  
HEB Grocery – Texas Ave. & Hwy 21

**WAYS TO PAY**



CASH



CHECK



CARD

Bring your BTU account number, BTU bill, keycard or reminder letter.

#### BRYAN TEXAS UTILITIES

205 East 28th Street • Bryan, TX 77803

email: [ContactBTU@btutilities.com](mailto:ContactBTU@btutilities.com)

**[www.btutilities.com](http://www.btutilities.com)**

#### Hours of Operation

Monday - Friday, 8 a.m. - 5 p.m.

#### Board of Directors

Mr. A. Bentley Nettles, Chairman  
Ms. Rosemarie Selman, Vice Chairman  
Mr. Pete J. Bienski, Jr., Secretary  
Mr. John A. Bond  
Mr. Paul Madison, Sr.  
Mr. Greg S. Owens  
Mr. Paul Turney  
Mr. Jason Bienski, Ex-Officio  
Mr. Buppy Simank, Ex-Officio

#### General Manager

Gary Miller

#### Executive Directors

Doug Lyles  
Randy Trimble  
Wes Williams  
David Werley, Chief Business Officer

#### Division Managers

James Bodine  
Nick Cook  
Shawndra Curry  
Ken Lindberg  
Clay Lindstrom  
Gary Massey  
Vicki Reim

#### City of Bryan

Kean Register, City Manager  
Will Smith, Chief Financial Officer  
Bernie Acre, Chief Information Officer

#### Important Numbers

Billing/Collections/Connects  
**(979) 821-5700**

Electrical Outage/Lines Down  
**(979) 822-3777**

Distribution/Line Design  
**(979) 821-5770**





# **Lineman Appreciation Day #THANKALINEMAN**

**115,000  
Lineworkers  
in US**

**45  
BTU  
Lineworkers**

**650 square mile  
service territory**



**Maintain 2,400 miles of  
BTU Distribution Line**

**4** years to become a  
Journeyman Lineman



**40-105ft  
in the air**

**IN ALL  
WEATHER**

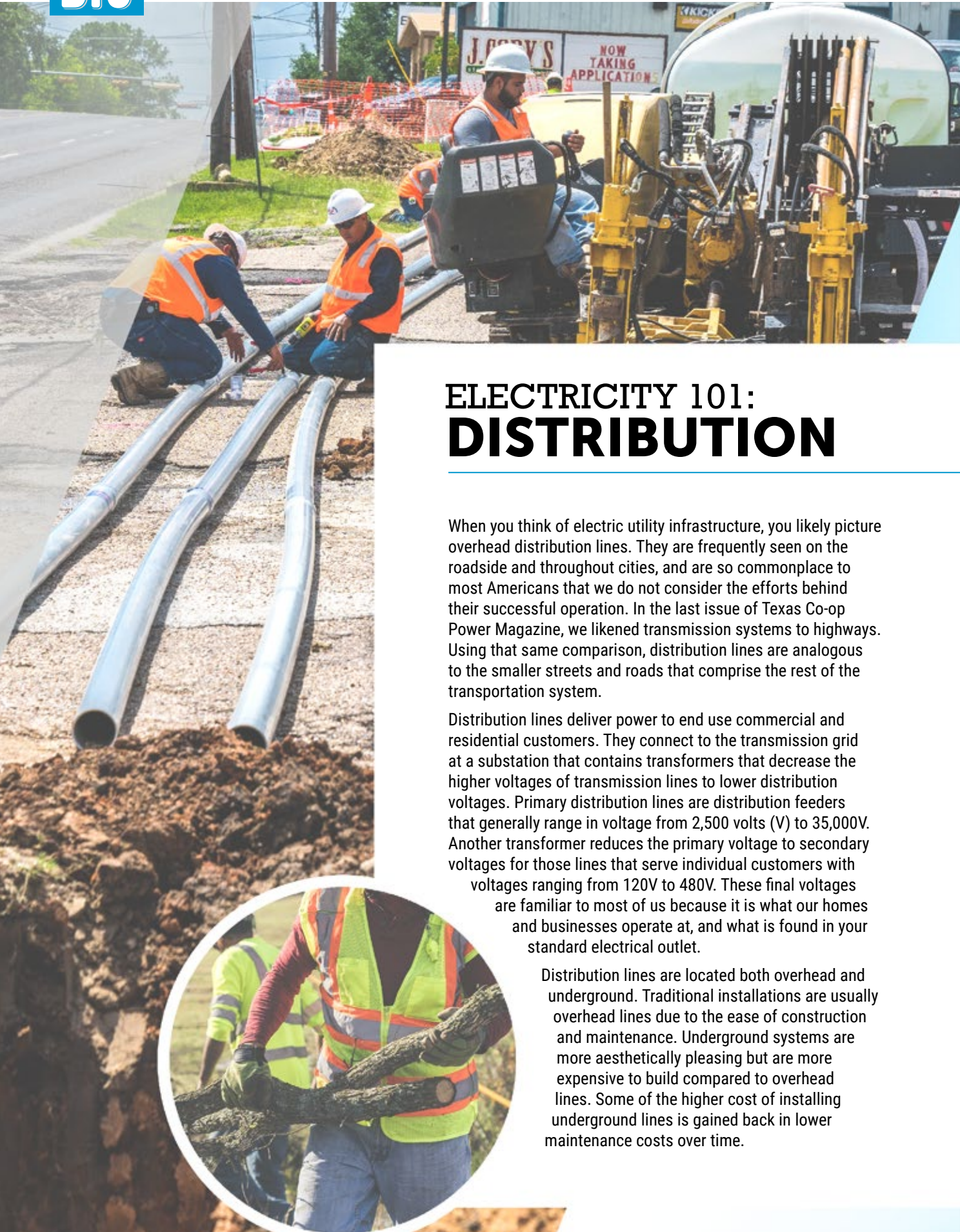
**CLIMB  
30-75ft**

**35lbs  
of gear**

**AT ALL  
HOURS**







## ELECTRICITY 101: DISTRIBUTION

When you think of electric utility infrastructure, you likely picture overhead distribution lines. They are frequently seen on the roadside and throughout cities, and are so commonplace to most Americans that we do not consider the efforts behind their successful operation. In the last issue of Texas Co-op Power Magazine, we likened transmission systems to highways. Using that same comparison, distribution lines are analogous to the smaller streets and roads that comprise the rest of the transportation system.

Distribution lines deliver power to end use commercial and residential customers. They connect to the transmission grid at a substation that contains transformers that decrease the higher voltages of transmission lines to lower distribution voltages. Primary distribution lines are distribution feeders that generally range in voltage from 2,500 volts (V) to 35,000V. Another transformer reduces the primary voltage to secondary voltages for those lines that serve individual customers with voltages ranging from 120V to 480V. These final voltages are familiar to most of us because it is what our homes and businesses operate at, and what is found in your standard electrical outlet.

Distribution lines are located both overhead and underground. Traditional installations are usually overhead lines due to the ease of construction and maintenance. Underground systems are more aesthetically pleasing but are more expensive to build compared to overhead lines. Some of the higher cost of installing underground lines is gained back in lower maintenance costs over time.





Underground facilities do not require vegetation management like overhead utilities. Trees and other plants must be trimmed or removed from the overhead right of way to ensure that overhead lines are not impacted by branches. Vegetation management becomes particularly important when adverse weather arises. Wind, lightning, and ice can cause trees and branches to fall into overhead lines. Underground infrastructure is less susceptible to vegetation infiltration and adverse weather conditions. Underground installations are now the standard for most new construction projects inside the City of Bryan.

Distribution systems include a variety of equipment such as switches, reclosers, capacitor banks, voltage regulators, and transformers that are used to control voltage, power quality, and other electric distribution characteristics. System operators can remotely control many of these devices from a central control room allowing them to significantly improve operations, efficiency, and outage restoration efforts. System Operation Centers are monitored 24 hours a day by certified operators to ensure grid reliability. Information from equipment on the distribution system can automatically be applied after an outage to isolate sections of the grid from the cause of the outage. System operators can redirect power to minimize the number of customers impacted, and equipment with predictive technology can help identify the problem, allowing crews to be dispatched to a pinpointed area. This equipment also provides information for real-time outage maps.

The energy in distribution lines typically flows unidirectionally from the distribution substation to the customer. However, lines can accommodate bidirectional exchanges in cases where a customer may have installed its own generation, such as solar panels. Generation located on the customer side of the meter is often referred to as distributed generation, and power can flow from the customer back onto the grid.

Maintaining the electric distribution system are one of the industry's heroes; lineworkers. Regardless of the weather conditions or time of day, they are ready to respond to restore power to the community. However, it takes a team to make the distribution system a success. Engineers, line designers, and system planners must design thoughtful and quality schemes that increase reliability and support growth. Lineworkers and construction crews must properly install equipment to ensure its effectiveness and long life. System Operators must closely monitor grid conditions around the clock and communicate with lineworkers regarding the grid status.

The distribution system is the last step in the process of power delivery. In the next issue of Texas Co-op Power Magazine, we will discuss electric metering and the ownership of metering infrastructure. Outages are an inconvenience, however the next time your power goes out, challenge your household to remember the men and women working to restore power in all weather and at all times of the day. When you flip the light switch, we hope you think of all of the employees of BTU that work every day to make sure that the light comes on.



*Legends Event Center Groundbreaking*



# Remembering **FLYNN ADCOCK** Councilmember

---

The City of Bryan family mourns the loss of Councilmember Flynn Adcock, who passed away on Jan. 17, 2022 at the young age of 57. He spent many years giving back to the City of Bryan through dedicated service on boards, commissions, and the Bryan City Council.

---

Councilmember Adcock was born in Prince Frederick, MD. His family moved from Maryland to their home state of Louisiana when he was two years old and then to Galveston when he was six. He graduated from Galveston Ball High School in 1982.

Academics, service, faith and politics were major forces in Flynn's life. After earning his Bachelor of Science degree in Economics from Texas A&M University in 1986, Flynn moved to the Washington D.C. area and worked for Congressman Joe Barton and on the George H.W. Bush presidential campaign. He earned Master of Science degrees in both Economics (1992) and Finance (1998) from Texas A&M University. He recently retired from Texas A&M University AgriLife Research, where he

served as the Assistant Director at the Center for North American Studies in the Department of Agricultural Economics. He conducted research in international trade and taught an International Agribusiness Marketing course for many years.

Councilmember Adcock's love for his community was evident by how he served it. In November 2020, he was elected to represent the Single Member District 4 of the Bryan City Council. He lived in District 4 since 1992. Prior to his election to Council, he served in various volunteer positions in the community. He served on the Bryan Texas Utilities (BTU) Board of Directors from 2012 to 2020. He was the BTU Representative on the City of Bryan Investment Committee from 2014 to



### *BigShots Golf Groundbreaking*



2019. He also served on the City of Bryan-Brazos County Economic Development Foundation (2021-2022), the Intergovernmental Committee (2020-2022), the Parks and Recreation Advisory Board (2008-2013), the Zoning Board of Adjustment (2005-2007), and the Community Development Advisory Committee (2004-2006).

Flynn's service to the community did not stop with the city. He served on the Hospice Brazos Valley Board of Directors and is a past-President of both the Kiwanis Club and the Brazos Valley Republican Club. In addition, he was a member of the Memorial Forest Neighborhood Association and was a founding member of The Oaks Neighborhood Association. Through this dedicated service, Mr. Adcock made a significant impact on the community.

Councilmember Adcock was honored for his contributions to the community at the Feb. 8, 2022 Bryan City Council meeting. On behalf of State Rep. John Raney, Mayor Nelson presented Councilmember Adcock's family with a Texas flag that flew above the Texas State Capitol and remembered the Councilmember with a moment of silence.

"Flynn was a great Councilmember and a good friend," said Bryan Mayor Andrew Nelson. "He was always well-prepared for meetings and always had the best interest of the entire city at heart."



*City of Bryan's 150th Anniversary  
Time Capsule Event*

---

*The City of Bryan extends its heartfelt  
condolences to Councilmember Adcock's family  
and friends. He will always be remembered for  
his kind heart and boisterous laugh.*

---

# SPRING HAS SPRUNG!

## KNOW WHAT'S BELOW

It is the prime time of year to plant a garden or overhaul for a full lawn makeover. However you are planning to revamp your backyard escape, remember to keep safety in mind for all projects— especially those that require digging near underground utility lines.

Most of us never think about the electric, gas, water, and other utility lines below ground, but hitting any of those while digging is not the reminder you want. Bryan Texas Utilities reminds all customers to **call 811** or submit a request online at **texas811.org** at least three business days before beginning a project that requires digging.

### How It Works

After you call 811 or submit your request online, all affected utilities will be notified of your intent to dig. The affected utilities will send someone out to mark buried lines with paint or flags. Before you break ground, confirm that all the involved utilities have responded to your request. If you placed your request by phone, use the process explained by the 811 call center representative. If you submitted your request online, refer to your 811 center ticket to confirm.

By taking this important step before you break ground on your project, you help protect not only yourself but the community. Disrupting an underground utility line can interrupt service, cause injuries, and cost money to repair.







Youth baseball and softball players can swing for the fences at the newly renovated Travis Fields at Travis Bryan Midtown Park.

The City of Bryan celebrated the grand opening of these beautiful turf fields on Friday, Feb. 11, 2022 with tours, a dedication of Linda Cornelius Field and a homerun derby.

Travis Fields is located directly north of the main Travis Bryan Midtown Park area, on Bomber Drive. The newly renovated facility features three turf fields, eight batting cages, spectator seating, shaded areas, playgrounds and more.

Tapping into a ripe youth and amateur sports market, these fields will change the landscape of baseball and softball in Central Texas. This facility will drive sports tourism to the area and continue to expand its number of fields while being a resource hosting Little League each year.

Travis Fields is owned by the City of Bryan and managed by RCI Sports Management Solutions.

**RCI** SPORTS  
MANAGEMENT  
SOLUTIONS

**B CITY OF BRYAN**  
*The Good Life, Texas Style.™*

Learn more at: [bryantx.gov/travisfields](https://bryantx.gov/travisfields)