

Regular Board of Directors *Meeting Notes*

July 11, 2022

Approval of a Contract for the Design of a Transmission Line

The Board approved a contract with Black and Veatch Engineering for the design for the RELLIS 138kV Transmission Line Project.

Approval of a Change Order to a Contract for Underground Utility Locating Services

The Board approved a change order to a contract with Private Solutions, LLC for underground utility locating services.

Joint Meeting of the BTU Board of Directors and the Bryan City Council – July 12, 2022

The BTU Board of Directors and the Bryan City Council met during the Council Workshop on Tuesday, July 12, 2022. BTU General Manager, Gary Miller, gave a summary regarding BTU's activities and accomplishments in the past year. William J. Smith, Chief Financial Officer, presented a review of BTU's financial standings.



Underground utilities installation, Texas Ave.

BRYAN TEXAS UTILITIES

205 East 28th Street • Bryan, TX 77803
email: ContactBTU@btutilities.com

www.btutilities.com

Hours of Operation

Monday - Friday, 8 a.m. - 5 p.m.

Board of Directors

Mr. A. Bentley Nettles, Chairman
Ms. Rosemarie Selman, Vice Chairman
Mr. Pete J. Bienski, Jr., Secretary
Mr. John A. Bond
Mr. Paul Madison, Sr.
Mr. Paul Turney
Mr. Jason Bienski, Ex-Officio
Mr. Buppy Simank, Ex-Officio

General Manager

Gary Miller

Executive Directors

Doug Lyles
Randy Trimble
Wes Williams
David Werley, Chief Business Officer

Division Managers

James Bodine
Nick Cook
Shawndra Curry
Ken Lindberg
Clay Lindstrom
Gary Massey
Vicki Reim

City of Bryan

Kean Register, City Manager
William J. Smith, Chief Financial Officer

BRYAN TEXAS UTILITIES KIOSKS

BTU Drive Thru – 205 E. 28th St. (Open 24 Hours)
HEB Grocery – Tejas Center on Villa Maria
HEB Grocery – Texas Ave. & Hwy 21

WAYS TO PAY



CASH



CHECK



CARD

Bring your BTU account number, BTU bill, keycard or reminder letter.

Important Numbers

Billing/Collections/Connects
(979) 821-5700

Electrical Outage/Lines Down
(979) 822-3777

Line Design
(979) 821-5770

Plant the Right Tree in the Right Place

For more tips on small tree planting in your community, contact BTU or visit www.ArborDay.org.

Trees beautify our neighborhoods, and when planted in the right spot, can even help lower energy bills. But the wrong tree in the wrong place can be a hazard... especially to power lines.

LARGE TREES

Height/spread of more than 40 feet, such as:

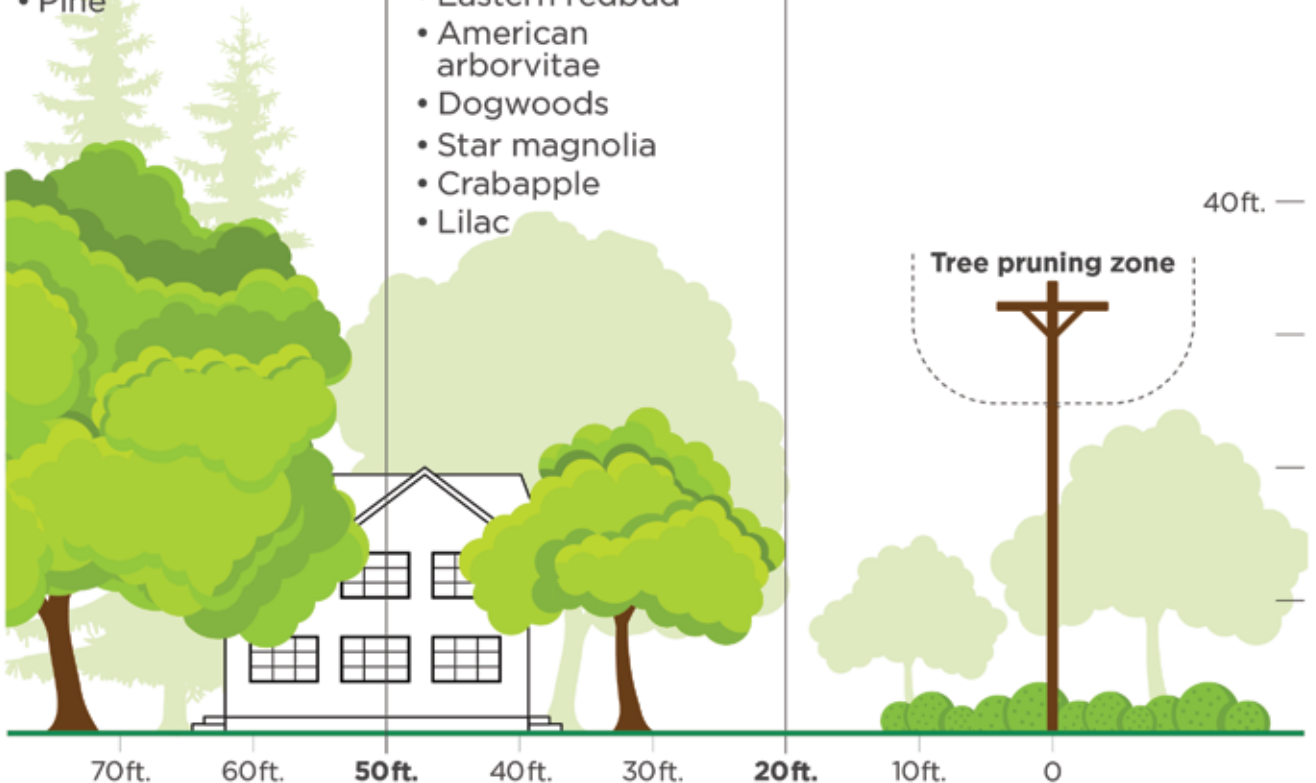
- Maple
- Birch
- Oak
- Sweetgum
- Spruce
- Linden
- Pine

MEDIUM / SMALL TREES

Height/spread of 25 to 40 feet, such as:

- Washington hawthorn
- Goldenraintree
- Eastern redbud
- American arborvitae
- Dogwoods
- Star magnolia
- Crabapple
- Lilac

Do not plant tree or shrubs within the 20-foot right-of-way easement around power lines.



Be safe! Always call 811 before you dig to locate any buried utility lines.

Source: The Arbor Day Foundation and the National Rural Electric Cooperative Association

THE ANATOMY OF A LINEMAN

HARD HAT:

Matches the hard-headed grit and determination needed to be a lineman. Insulated against electric currents and protects the head from possible falling objects.

BRAIN:

See also "noggin". Holds the knowledge of most of the electrical scheme in their territory and of all of those that came before them.

CLOTHING:

Linemen don only the most stylish 100% cotton and Fire Retardant uniforms. Protects from possible electrical burns.

GUTS:

The gumption to climb a pole in the middle of the night during a thunderstorm, in the bitter cold of winter or mid-day in triple-digit heat.

HOMOSAPIEN ELECTRICUS:

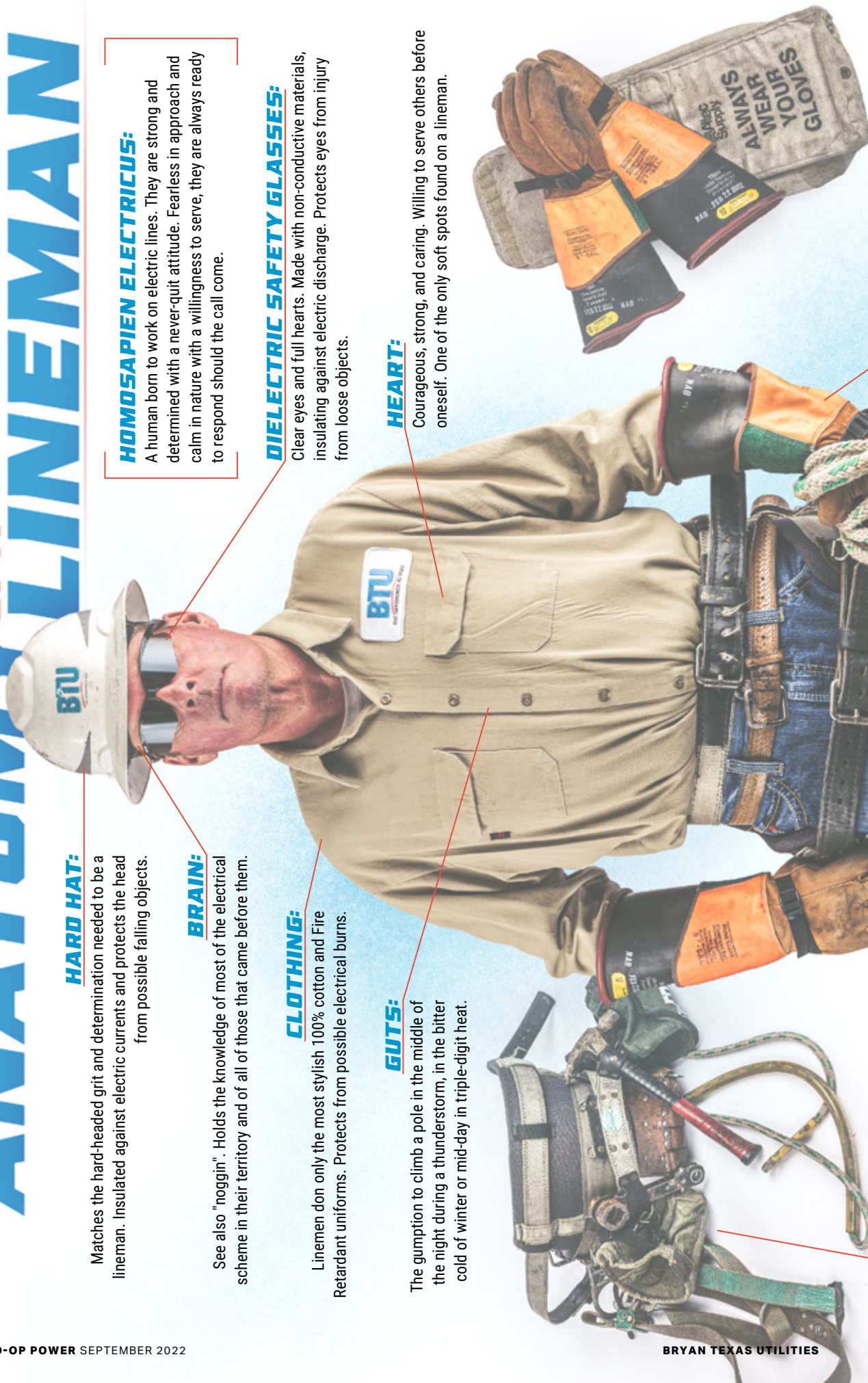
A human born to work on electric lines. They are strong and determined with a never-quit attitude. Fearless in approach and calm in nature with a willingness to serve, they are always ready to respond should the call come.

DIELECTRIC SAFETY GLASSES:

Clear eyes and full hearts. Made with non-conductive materials, insulating against electric discharge. Protects eyes from injury from loose objects.

HEART:

Courageous, strong, and caring. Willing to serve others before oneself. One of the only soft spots found on a lineman.



EQUIPMENT BELT:

Batman-style utility belt that holds all the tools of the trade. The double strap helps secure more than 40lbs of gear.

INSULATED GLOVES:

Rubber gloves worn with a leather cover over calloused hands to protect from electric shock or burn. Tested up to 30,000 volts.

SAFETY STRAP:

Lifeline; leather strap that is looped around the pole to secure the lineman so he can work with both hands.

CLIMBERS:

Contoured metal braces that attach to the feet and lower legs to secure the gaffs and provide support when climbing.

GAFFS/HOOKS:

Steel points that enable linemen to securely climb poles. The only time we "hook 'em" around here is when linemen sink their hooks into wooden poles.

BOOTS:

Not the cowboy kind (likely has those in his closet). These boots are 14-16 inches tall to protect against accidental gouging from the gaffs while climbing.

HAND LINE:

A lineman's Swiss Army knife. Used with clips, hooks and a pulley to hoist equipment to the top of a pole. Can be used to perform life-saving measures, known in the industry as "hurt man rescue".



LAKE BRYAN TRAIL REVIEW

By Anna Lad



LAKE BRYAN

LAKE BRYAN TRAIL SYSTEM

LOOKING TO GET OUTSIDE THIS SUMMER?

Beat the heat out at Lake Bryan by walking, running, or biking the trails that wind alongside the lakeshore. You can jog to your heart's content, and then take a dip in the cool water of Brazos County's only public freshwater lake.

Lake Bryan boasts **over 24 miles of paths** for any ability, whether you're interested in a leisurely walk or training for your next trek up a mountain. You can even bring your leashed pooch. Trails are constructed and maintained by the Brazos Valley Mountain Bike Association, and are graded from easy to difficult with signage posted throughout the park. **Which are the best trails? Well, that's up you. There are 38 to choose from!**

(Trail maps are available online at bvmba.net or in-person at Lake Bryan when you pay your \$5 per car entry fee.)



EAST LAKE TRAIL HIGHLIGHTS:

Wildflower Tunnel is a flat, sandy path great for recovery and nature viewing. There's a stretch along an open meadow where yaupon shrubs arch over the path, making a natural tunnel.

Turbo Road is a great central meeting point for the person who wants to try everything. It runs straight along the midpoint of most of the East Loop's trails. You'll see signage for Loop De Loop, Home Run, and Wayback.

Octopus and Rat Maze are great mountain biking trails. Narrow turns, exposed tree roots, and inclines and declines make for an exciting ride.

Don't forget to check out the approach to the bridge on Munnerlyn Loop – on foot, it's steep. But on a bike? You're in for an exhilarating ride!

WEST LAKE TRAIL HIGHLIGHTS:

Walkers, take note! The West Loop has many paths to suit you. After some winding switchbacks in Last Pass, the trail evens out along several stretches, including Monkey Butt, Good To Go, and Flat Tire Flyer.

Bikers and endurance runners will enjoy venturing all the way up to Little Warda and Half Pipe. Don't lose your footing on the bridges, or you might tumble into Poison Ivy Alley or the Valley of Thorns!

Even though there are fewer trails on the West Loop, you'll still find a challenge in Doggy Dash and The Jungle. These paths use switchbacks and tight curves to make things interesting.

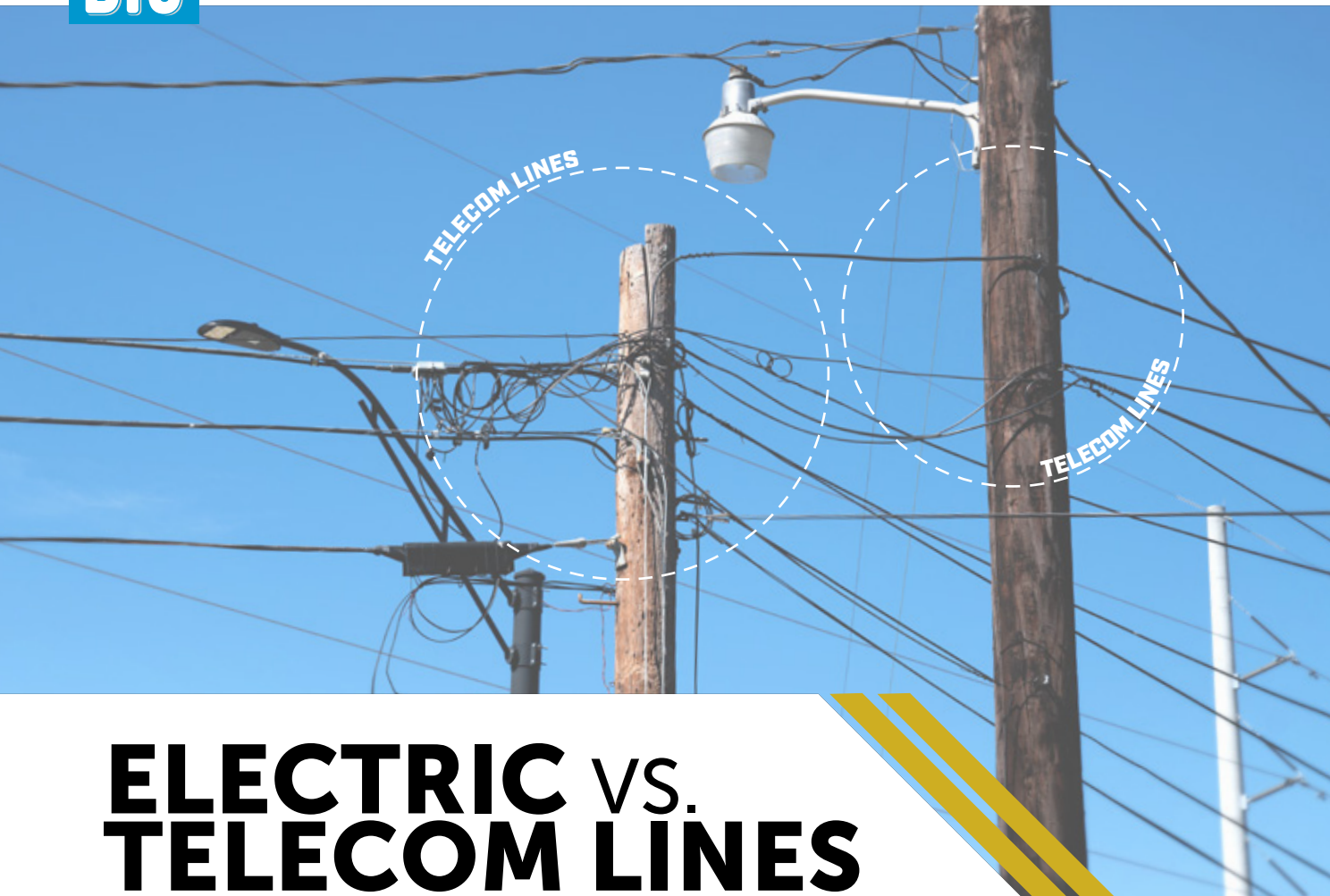
BONUS TIPS:

Even though the trails are shady, stay cool by bringing water, a hat, and sunscreen. The best place to park to access the trails is in the first parking lot before the bridge. A few hundred feet after the entrance booth, follow the one-way sign on the left into the parking lot with the boat ramp and Cadillac Ranch Bar & Grill.



Once rainstorms return to Brazos County, the trails may close from time to time. Some of the lower gullies get muddy after it rains. Volunteers from the Brazos Valley Mountain Bike Association visit regularly to keep the trails in tip-top shape. You can always check the trail status by reading the signs at the entrance to the trails – they will say 'open' or 'closed.'

Head out to Lake Bryan for all your biking, hiking, or nature walking adventures. It might just become your favorite nature spot in Bryan/College Station!



ELECTRIC vs. TELECOM LINES

Utility poles can be home to more than just electric lines. They often support telecommunication infrastructure as well. It is important to know the differences between electric and telecommunication lines in order to identify and report safety hazards.

Electric lines are located higher above the ground than telecom lines and are not directly attached to poles. Instead, they are connected to insulators that protect the pole from becoming energized. Electric lines and poles may also support other electrical equipment such as fuses, transformers, or capacitors.

Telecom lines are often directly attached to the utility pole, and have little other connected equipment. They can also appear thicker or larger than electric lines. Since they operate at very low voltages, telecom lines may continue to function with trees growing into them or if they have fallen onto the ground.

Telecommunication lines may be connected to BTU poles, but they are not maintained or constructed by BTU. Pole attachment agreements between BTU and other entities allow telecom lines to be affixed to BTU poles to improve efficiency and reduce the number of poles needed to support infrastructure. However, some telecom lines may be located on separate poles that are typically much smaller in stature.

While telecommunication lines operate at much lower voltages than electric lines, one should still stay at least 10 feet away from low-hanging or downed lines. If there is an issue with telecommunication lines, the local telecom company should be contacted for resolution. If there is a safety hazard or issue with electric lines or a BTU utility pole, stay far away from any downed power lines and report immediately to BTU's 24-hour system operations center at **979-822-3777**.



BIGSTOCKPHOTO.COM ©

CALL US FIRST



Every day, we are bombarded with sales tactics for the latest and greatest products and services. Whether it be TV, radio, junk mail, email, social media, or soliciting phone calls, it just never seems to end, and it can be hard to know whom to trust.

But one thing is for sure: You can trust Bryan Texas Utilities, your locally owned and operated electric provider. **So call us first.**

At BTU we are in the business of powering – and empowering – our customers and the Bryan/College Station community. We are your friends and neighbors, and we live right here in the Brazos Valley. We go to the same stores, churches and restaurants, and we work for you.

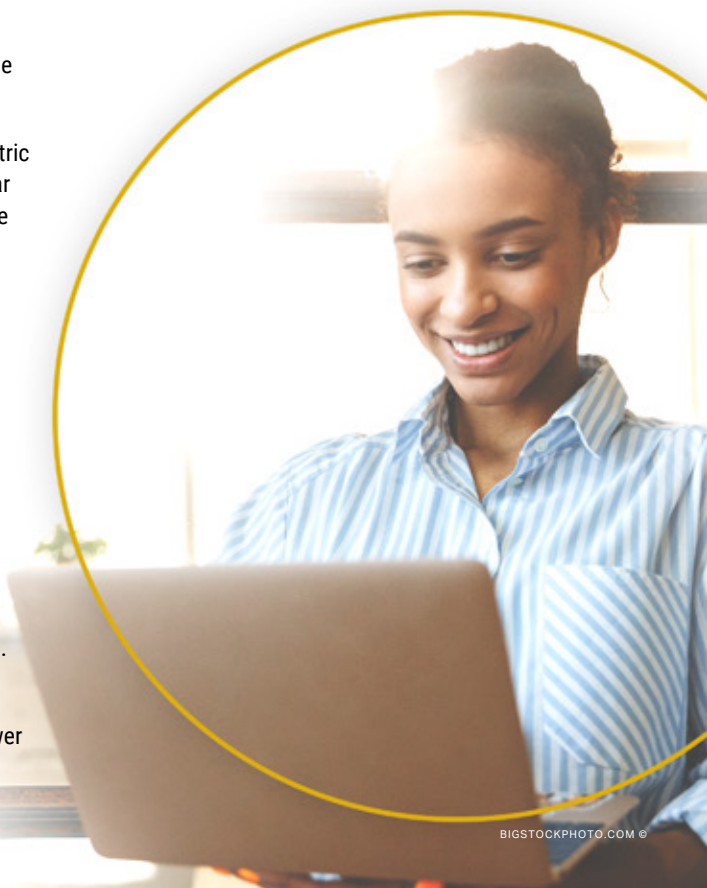
We know consumers have more options than ever to complement their electric usage, including whole home generators, batteries, electric vehicles, or solar panels. As a not-for-profit, municipally-owned utility that was founded by the very community it powers, we have a duty to share our specialized energy knowledge with our customers. We want to make sure you have the best information when it comes to making decisions about electricity that can impact your future. Some of our employees have been in the industry for nearly 40 years, they have seen it all. Every customer's situation is different, and BTU can give an unbiased assessment of yours.

So if you are thinking about solar power or a whole home generator and wonder if it might be right for your home, call us first. We can help make sure you buy reputable products from reputable sources that are sized and installed correctly to safely power your home.

Wondering if it's feasible to add an electric vehicle to your garage? Call us first. We can discuss the specifics about installing a home charging system.

Want to save on your electric bill? Call us first. We know our area of Texas better than anyone and can help you find inexpensive ways to conserve power at your home.

Whatever you do, you can trust your friends and neighbors at Bryan Texas Utilities.



BIGSTOCKPHOTO.COM ©